

For complete installation instructions and video, visit www.AFLglobal.com/APEX or use the QR code.



SPLICE TRAY OPTIONS AND ROUTING

Splice modules shown in Apex splice trays. Installation will be similar in all applications.

Ordering Information

DESCRIPTION	TRAY CAPACITY		AFL NO.
	SINGLE	MASS	
Splice Module (18 single fusion triple stacked, 12 mass fusion double stacked, 6 mechanical) – Pack of 20	-	-	AX-TRAY-MOD-20

Splice trays can be shipped empty, partially loaded or fully loaded and splice modules are field movable. (Figure 1)

1. To add a splice module to Apex splice tray, simply align the latch tabs. (Figure 2)
2. Slide to engage. (Figure 3)
3. To remove a splice module simply disengage the locking tabs on the back with a pair of shears and slide module to release latch. (Figure 4)
4. SWR and Loose Tube fiber is spliced using slack storage in the tray. (Figure 5)
5. Flat matrix ribbon is typically waterfall spliced; but there is room for storage if desired. (Figure 6)

⊗ *The openings between modules are designed to act as a fiber pathway if desired.*

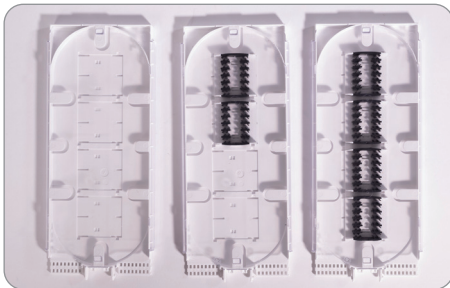


Figure 1

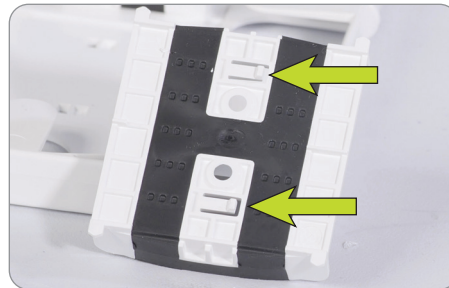


Figure 2

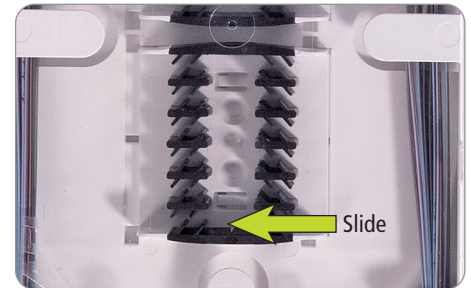


Figure 3



Figure 4

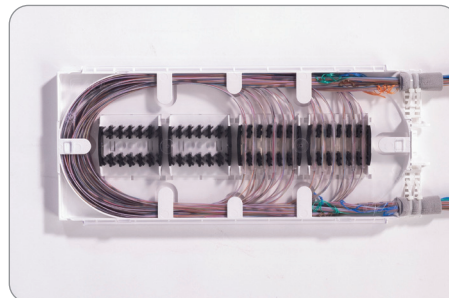


Figure 5

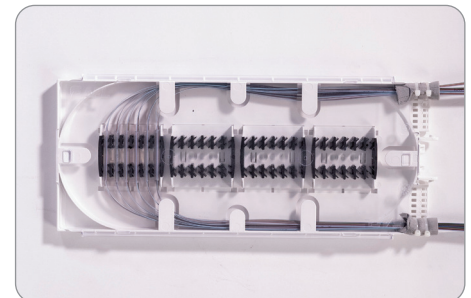


Figure 6