

The Cloud: A Safe Haven for Your Dispatch Data

By leveraging the isolated nature of cloud solutions, firms heighten their organization's information security against these damaging cyberattacks.



Ransomware

Ransomware is a type of malicious software designed to block access to a computer or network until a sum of money is paid.

The isolation that comes with cloud environments creates an air gap, adding an additional layer of security. Also, if an organization's on-site system becomes compromised, the cloud remains operational.



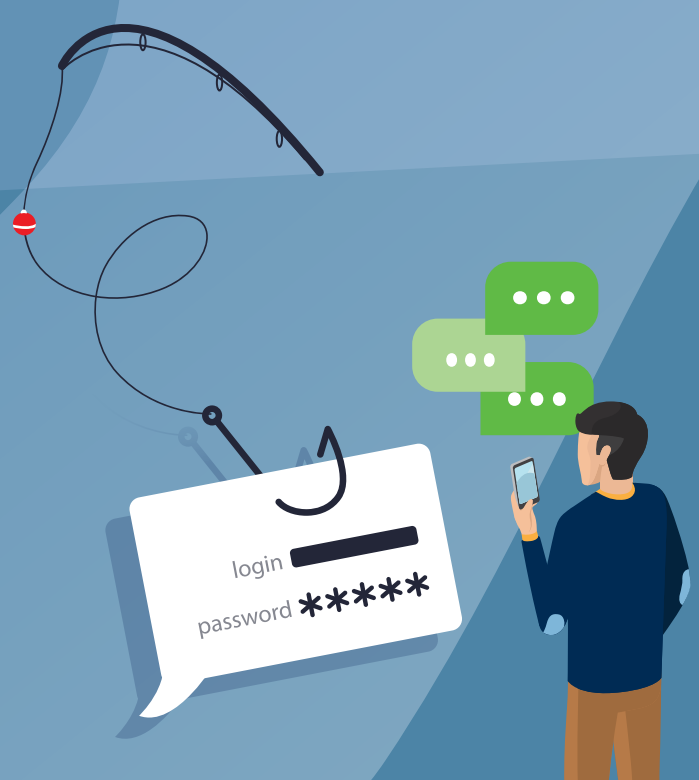
The average enterprise ransom payment exceeds \$100,000

McAfee Labs 2022 Threats Report

Social Engineering

Typically, Social Engineering is a form of phishing that tricks users into making security mistakes or giving away sensitive information.

Properly configured cloud environments are less likely to be compromised.



Social Engineering ranked as the #1 top attack type in 2022

ISACA, 2022



62% of network intrusions originate with a third-party

Verizon, 2022

Faulty Third Parties

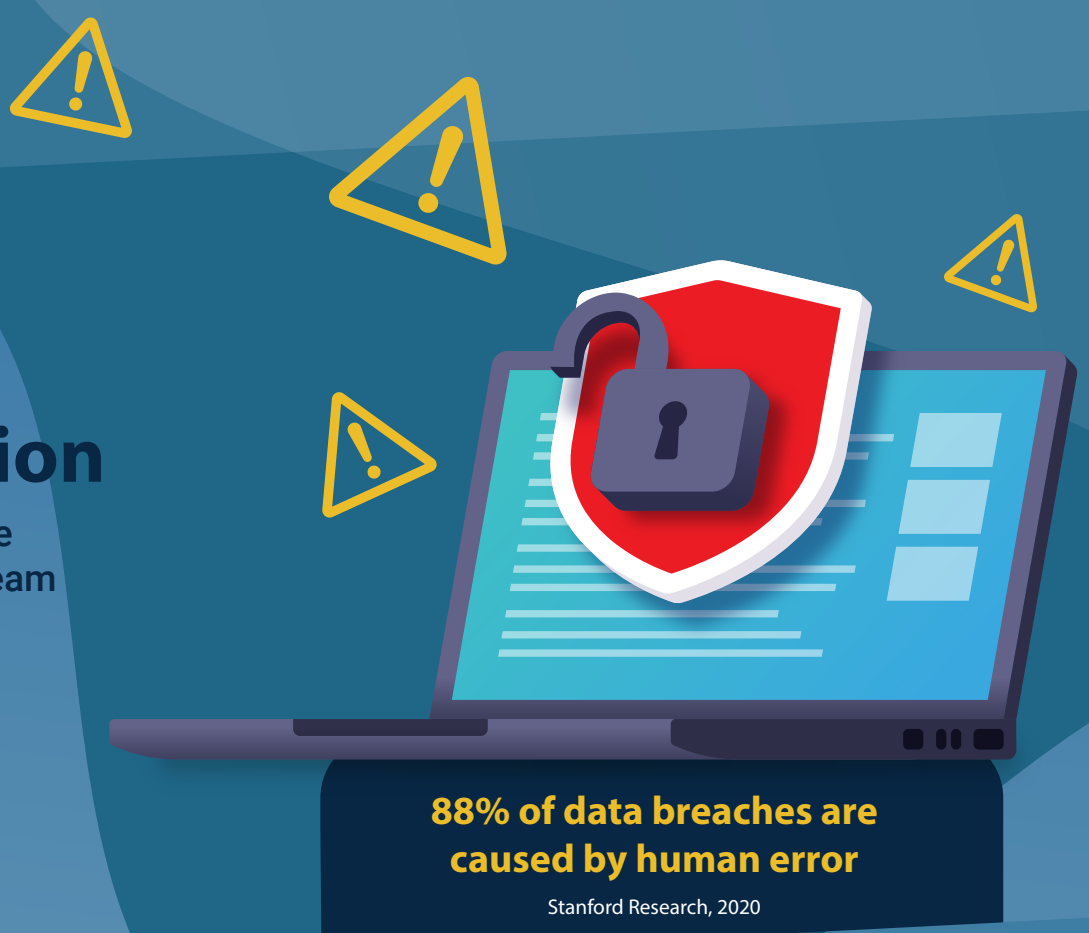
Any third-party vendor without best-in-class validation can be a conduit for a data breach or attack.

It's critical to safeguard your proprietary information and demand the same from everyone you engage with.

Security Misconfiguration

Omitting necessary security controls can be devastating. Even organizations that have a team of security experts could be at risk.

Organizations must be vigilant to avoid misconfigurations and the risks they pose.



88% of data breaches are caused by human error

Stanford Research, 2020



Vulnerabilities as old as 2017 are still being successfully exploited in wide-ranging attacks

Threat Landscape Report, 2022

Unpatched Systems

Most organizations target a 90% patch success rate, which is not good enough. The left over 10% is an open door for hackers to waltz right in.

Cloud customers have the advantage of their provider's around-the-clock patching support.



There's peace of mind that comes with migrating your dispatch operations to the inherent security cloud provides.

Command Alkon can help you every step of the way.

[Talk to an Expert](#)