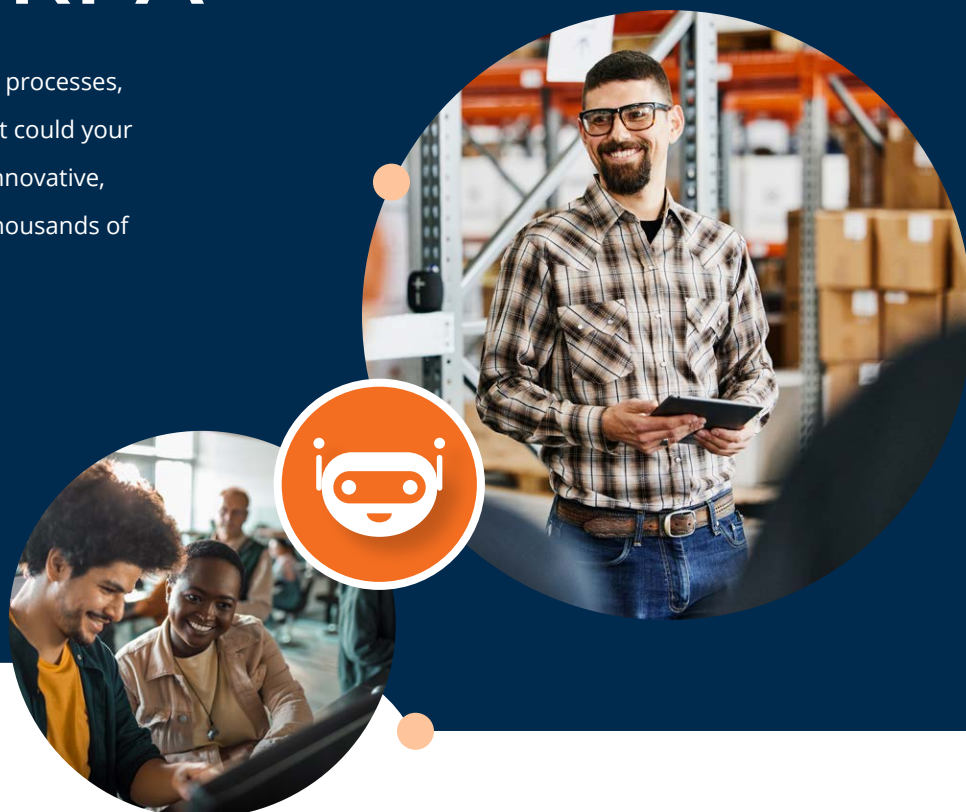


## ROBOTIC PROCESS AUTOMATION

# Automate repetitive tasks with RPA

Organizations are burdened by high-volume processes, impacting their focus on core business. What could your company achieve if employees focused on innovative, results-driven work, instead of completing thousands of repetitive, manual processes each day?



**Nintex RPA enables businesses to create 24/7 virtual workforces that drive speed, agility, and efficiency**



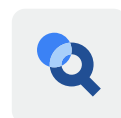
### Create

Develop automations in minutes rather than hours, no coding required.



### Orchestrate

Schedule, manage, and monitor robots from anywhere with our web-based Console.



### Analyze

Continually analyze KPIs to make data-driven decisions for optimal performance.

# What is Nintex RPA?

With five patents for machine learning and computer vision, our proprietary technologies enable robots to see the screen and interact with an application just as a person would – empowering our solution to work with any software environment or computer application with zero integration.

Nintex RPA enables businesses to create 24/7 virtual workforces that drive speed, agility, and efficiency. Our attended automation leads the industry with specialized modes and technology. While our unattended automation solution provides automated triggers to start the robots any time, no humans needed.



## ATTENDED AUTOMATION

### A DESKTOP PERSONAL ASSISTANT

We pioneered RPA attended automation and lead the industry with the most complete attended solution. From the desktop, employees can call on bots to help perform tasks and processes. By supporting front and back-office processes, attended automation maximizes productivity by empowering employees to complete tasks with greater speed, accuracy, and efficiency.

**GUIDE ME MODE** walks employees step-by-step through live processes to ensure accuracy.

**DO IT MODE** allows employees to hand-off tasks to an attended robot to complete, while the employee monitors status.

**INTELLIGENT SENSOR TECHNOLOGY** watches an employee's actions within a live application to ensure compliance and offers guidance or automation when needed.



## UNATTENDED AUTOMATION

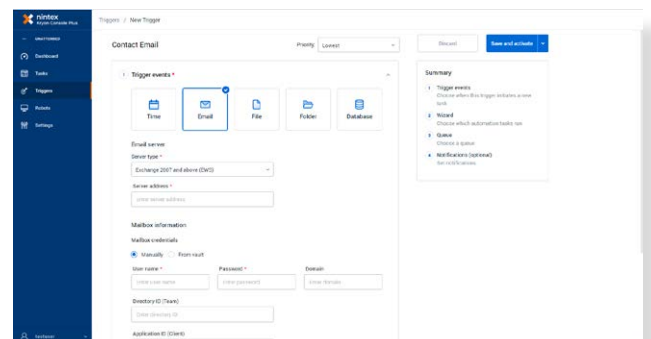
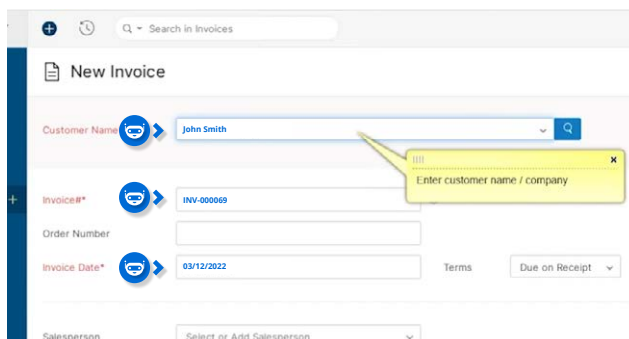
### 24/7 VIRTUAL WORKERS

Equipped with intelligent decision-making ability, Nintex RPA unattended automation creates virtual robotic workforces that complete tasks in less time, with increased accuracy, no human errors, and lower operational costs. Scalable for high volumes during peak periods, the bots perform tasks that are definable, repeatable, and logic based.

**IMPROVE ACCURACY** and efficiency by offloading repetitive, time-consuming tasks.

**MAXIMIZE PRODUCTIVITY** by freeing employees to focus on high-value, innovative, mission critical work.

**AUTOMATICALLY START** the robots 24/7 by setting triggers, no human required.



See how easy it is to get started with robotic process automation  
[nintex.com/RPA](https://nintex.com/RPA)



# We understand the language of business.

See how Nintex RPA benefits yours.

## CIO/CTO OF AN ENTERPRISE COMPANY

- ✓ **COST REDUCTION**  
RPA robots complete tasks in less time, with greater accuracy, and at a fraction of the cost, improving outcomes, reducing operating costs, and increasing revenue.
- ✓ **QUALITY IMPROVEMENT**  
Nintex RPA solution incorporates advanced security features, such as multi-tenancy, permissions management, and a credentials vault to control access privileges.
- ✓ **QUICK SCALABILITY**  
Nintex RPA can be quickly scaled to manage spikes in business. Robots can be instructed to address periodic peak scheduling – resulting in significant cost savings and efficiency.

## BUSINESS UNIT MANAGER

- ✓ **IMPROVED EMPLOYEE EXPERIENCE**  
RPA helps employees offload mundane repetitive tasks allowing them to focus on fulfilling and challenging work that drives business innovation.
- ✓ **INCREASE ACCURACY**  
RPA eliminates the risk of human errors by reducing how often employees manually input or transfer data, preventing costly, time-consuming re-work.
- ✓ **SAVE HEADCOUNT**  
Scale the virtual workforce without having to hire additional FTE, a challenge in the current job marketplace. One bot can do the work of 3 – 5 employees, 24/7.

## HEAD OF CENTER OF EXCELLENCE

- ✓ **FOSTER AGILITY**  
Businesses can respond to rapidly changing needs by quickly scaling the virtual RPA workforce to execute high volumes of tasks 24/7 or during peak periods.
- ✓ **LEANER COE**  
Drag-and-drop interface designed for business users enables lower reliance on RPA developers and third-party resources.



## IT OPERATIONS

- ✓ **EASY MANAGEMENT**  
No-code drag-and-drop user interface. No need to rely on in-house developers or external resources, saving effort, time, and budget.
- ✓ **EXECUTE ACROSS INFRASTRUCTURE**  
Virtual robots work in any application and across applications, including Citrix, web-based, legacy, and desktop, without the need for integration.
- ✓ **MAXIMIZE EFFICIENCY**  
Nintex RPA is designed for business users allowing more people in the company to automate more processes across departments for increased efficiencies.

## KEY FEATURES

# What makes Nintex's enterprise-level RPA solution industry leading

### INDUSTRY-LEADING ATTENDED AUTOMATION

Nintex offers the most complete attended solution to maximize productivity. Guide Me and Do It modes provide on-call robot support, and Sensor technology ensures accuracy and compliance.

### WORLD-CLASS OCR

Patented technology for machine learning and OCR allows our robots to see the screen and interact with an application just as a person would. Our robots can work with any software environment or application, and across applications, no integration needed.

### NO-CODE USER INTERFACE

No need to rely on in-house developers or external resources, our studio is designed for business users with no programming skills. Easily create automated processes using the drag-and-drop interface and augment with extensive advanced commands.

### EXTENSIVE ADVANCED COMMANDS LIBRARY

Our studio offers more than 200 commands allowing you to create loops and conditions, run programs, execute script and database queries, manipulate Excel files, send, and receive emails, and much more to automate even complex processes.

### FAST TIME TO VALUE

Nintex RPA alone may return an ROI of 220% to automate just one process according to the [Forrester Total Economic Impact Study](#). By reducing how often employees manually input data, errors decrease. Consistent first-entry accuracy helps prevent costly, time-consuming re-work.

### ADVANCED SECURITY AND PRIVACY

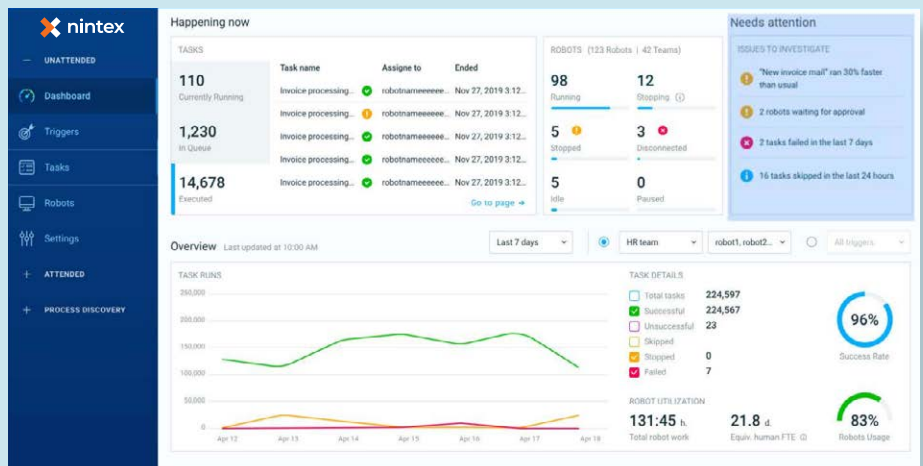
Nintex RPA includes advanced privacy and security features such as multi-tenancy, permissions management, and a credentials vault to control access privileges. We're the only RPA vendor with ISO 27701 certification, plus ISO 9001, SOC-2, and ISO compliant. Our platform is GDPR compliant and is conformed to PCI and HIPAA regulations.

### INTEGRATION WITH PROCESS DISCOVERY™

Nintex RPA automates processes. But which processes to automate and why? Nintex Process Discovery is the market-leading tool that helps you leverage RPA five times faster through quickly identifying, mapping, and recommending the best tasks for automation.

### QUICK SCALABILITY

Scale your workforce up or down as needed. Group your robots by task types, business units, or other criteria to manage your virtual workforce more efficiently. Assign a robot to a group to optimize task assignment by using the first available robot to complete a task.



See how easy it is to get started with robotic process automation  
[nintex.com/RPA](https://nintex.com/RPA)



---

# Support at every step

Nintex is passionate about helping you achieve your digital transformation goals, so we offer support resources every step of the way. Our support and implementation teams help you get started, while the Nintex Community, Nintex University, and Nintex Solution Accelerator Gallery support you as you move forward in your digital journey. We even have a Customer Portal just for you.



## About Nintex

Nintex offers a powerful, easy-to-use, and complete platform that helps companies discover, automate, and optimize business processes to drive growth. The Nintex Process Platform offers intelligent forms, advanced workflow, digital document generation, eSignatures, robotic process automation (RPA), process discovery technology, and a powerful process management solution. With more than 15 years of experience, we are a company of process experts, supporting more than 10,000 customers across the globe every day.

Learn more by visiting [www.nintex.com](http://www.nintex.com)